

TiNA–Tietoteollisuudennaiset

Anna-Kaisa Juhola, Anneliina Sipiläinen (updated and augmented by Piia Simpanen)

The proportion of women in applicants, accepted, matriculated, students, graduates and post-graduate students in 1998-2006

**Helsinki University of Technology, Department of Electrical and Communications Engineering
(Compared with the departments of Mechanical Engineering, Civil and Environmental Engineering,
Computer Science and Engineering, and all TKK)**

Applicants in TKK*

Department	1998			1999			2000			2001			Department
	all	women	women%	all	women	women%	all	women	women%	all	women	women%	
Mechanical Engineering	341	20	5,9	339	42	12,4	258	38	14,7	260	27	10,4	M
Civil and Environmental Engineering	100	44	44,0	178	66	37,1	114	45	39,5	129	54	41,9	CE
Computer Science and Engineering**	488	37	7,6	511	36	7,0	463	45	9,7	441	39	8,8	C**
Electrical and Communications Engineering	497	42	8,5	577	70	12,1	566	74	13,1	470	74	15,7	EC
Helsinki University of Technology***	2788	594	21,3	2811	663	23,6	2705	695	25,7	2737	730	26,7	TKK***

Department	2002			2003			2004			2005			Department
	all	women	women%	all	women	women%	all	women	women%	all	women	women%	
Mechanical Engineering	385	41	10,6	317	24	7,6	283	24	8,5	299	26	8,7	M
Civil and Environmental Engineering	227	78	34,4	165	57	34,5	234	78	33,3	196	75	38,3	CE
Computer Science and Engineering**	320	26	8,1	222	19	8,6	187	7	3,7	184	16	8,7	C**
Electrical and Communications Engineering	388	48	12,4	628	167	26,6	525	136	25,9	463	116	25,1	EC
Helsinki University of Technology***	2646	695	26,3	2570	721	28,1	2547	692	27,2	2441	657	26,9	TKK***

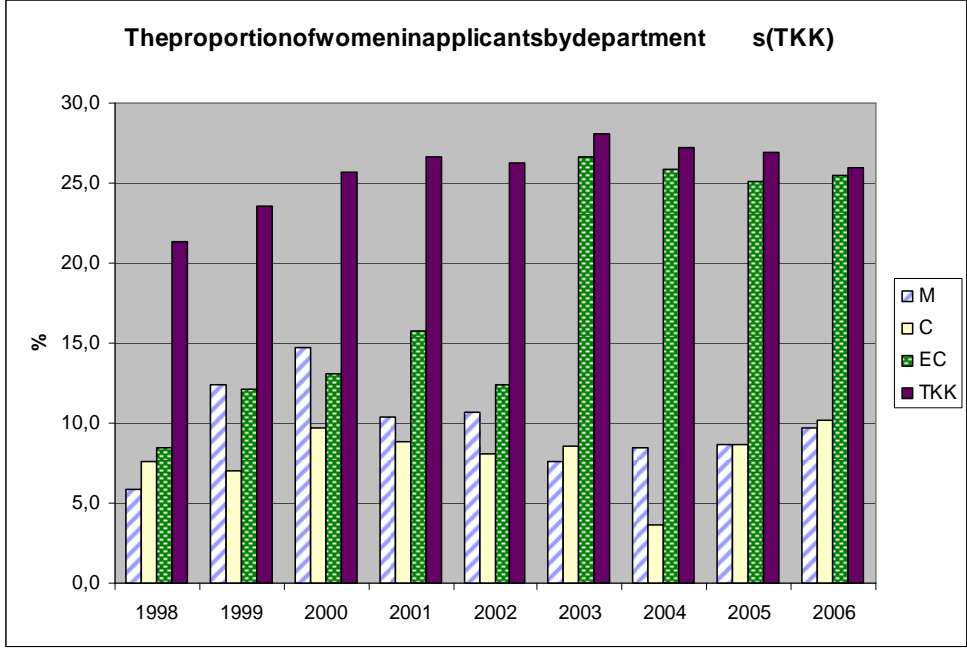
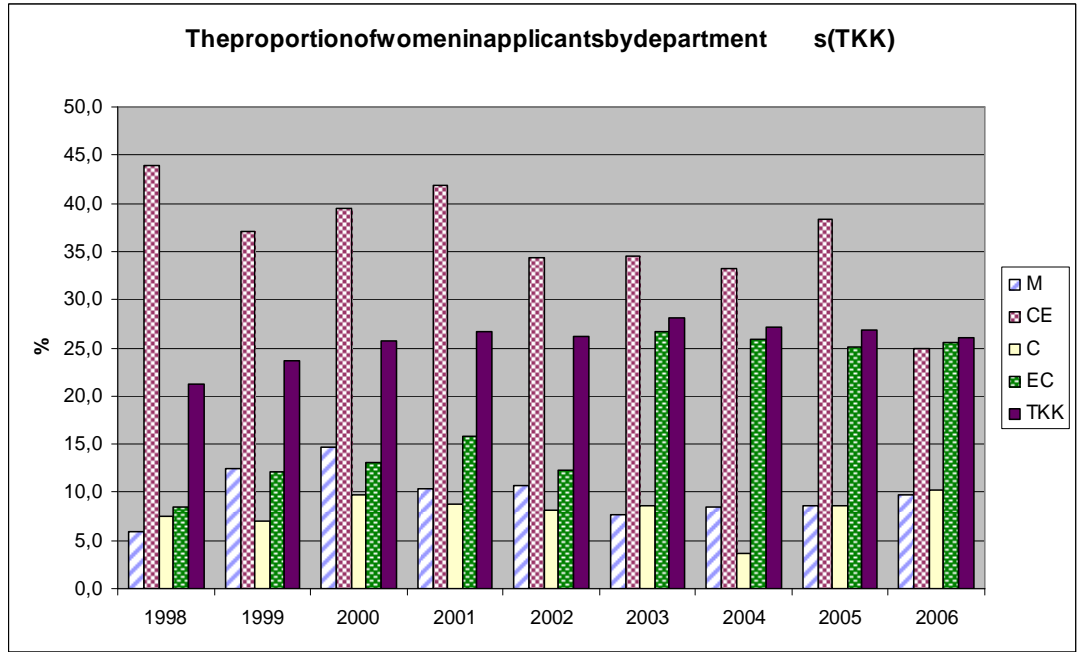
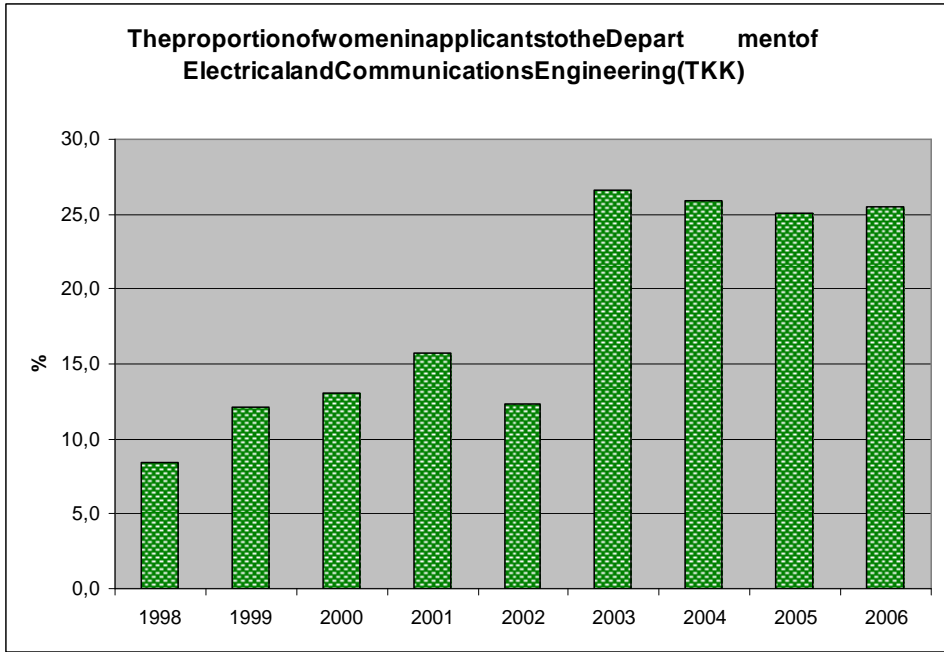
osasto	2006			Department
	all	women	women%	
Mechanical Engineering	330	32	9,697	M
Civil and Environmental Engineering	205	51	24,88	CE
Computer Science and Engineering**	138	14	10,14	C**
Electrical and Communications Engineering	439	112	25,51	EC
Helsinki University of Technology***	2326	604	25,97	TKK***

*according to the principal choice

**the Information Networks Degree Program is not included

***applicantsto any TKK departments with priority 1

A new bioinformation technology study programme began in the year 2003 at the Department of Electrical and Telecommunications Engineering
Source: HAREK



Definition

- M** Department of Mechanical Engineering
- CE** Department of Civil and Environmental Engineering
- C** Department of Computer Science and Engineering*
- EC** Department of Electrical and Communications Engineering
- TKK** Helsinki University of Technology

HAREK

*the Information Networks Degree Program is not included

Accepted in TKK

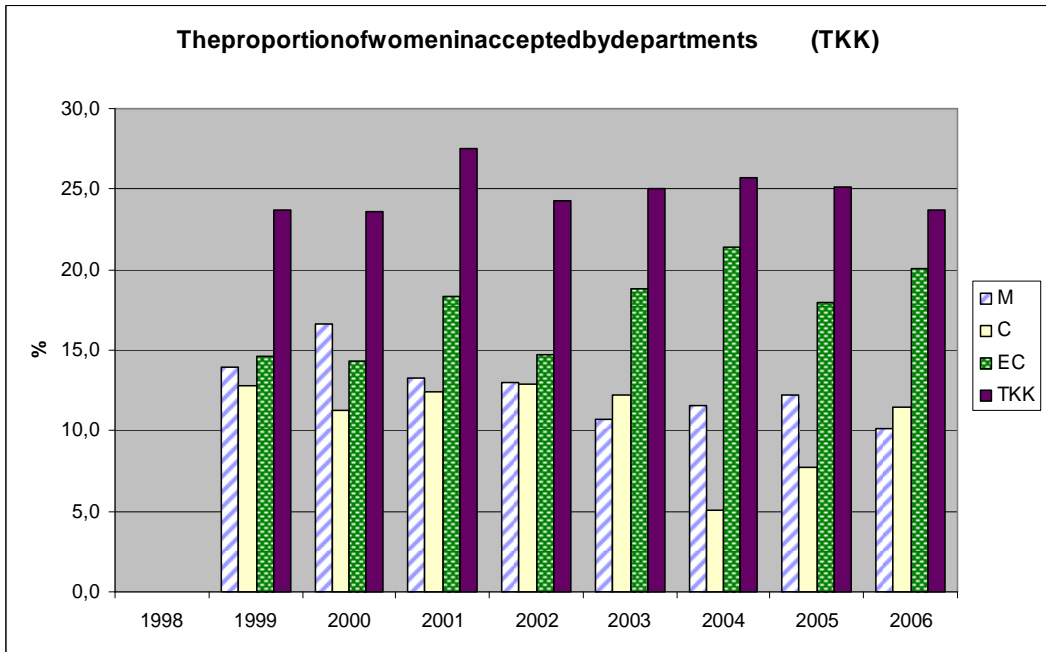
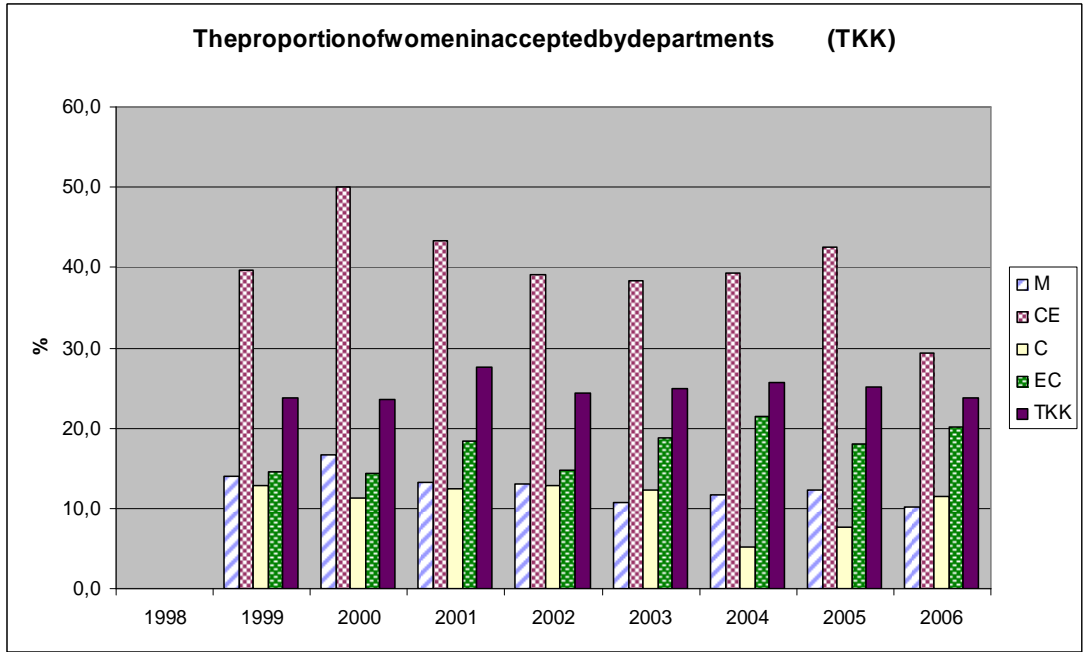
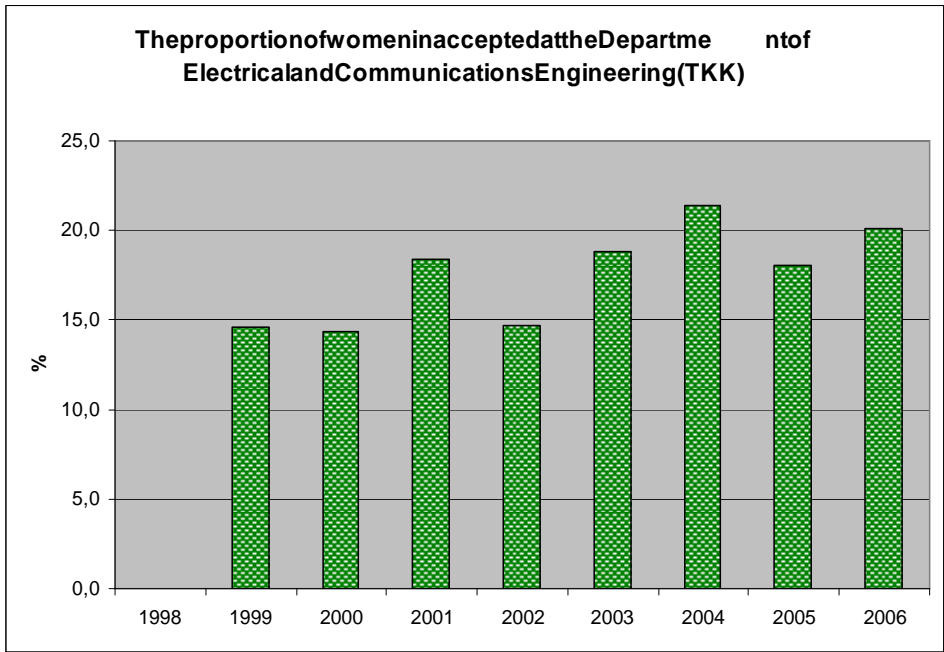
Department	1998			1999			2000			2001			Department
	all	women	women%	all	women	women%	all	women	women%	all	women	women%	
Mechanical Engineering				345	48	13,9	331	55	16,6	323	43	13,3	M
Civil and Environmental Engineering				126	50	39,7	116	58	50,0	150	65	43,3	CE
Computer Science and Engineering*				335	43	12,8	329	37	11,2	273	34	12,5	C*
Electrical and Communications Engineering				500	73	14,6	509	73	14,3	484	89	18,4	EC
Helsinki University of Technology				2132	506	23,7	2019	476	23,6	1949	537	27,6	TKK

Department	2002			2003			2004			2005			Department
	all	women	women%	all	women	women%	all	women	women%	all	women	women%	
Mechanical Engineering	323	42	13,0	307	33	10,7	294	34	11,6	255,0	31,0	12,2	M
Civil and Environmental Engineering	151	59	39,1	173	66	38,2	145	57	39,3	155,0	66,0	42,6	CE
Computer Science and Engineering*	263	34	12,9	181	22	12,2	157	8	5,1	143,0	11,0	7,7	C*
Electrical and Communications Engineering	469	69	14,7	447	84	18,8	393	84	21,4	366,0	66,0	18,0	EC
Helsinki University of Technology	2008	488	24,3	1884	471	25,0	1749	450	25,7	1577	393	25,1	TKK

Department	2006			Department
	all	women	women%	
Mechanical Engineering	247	25	10,1	M
Civil and Environmental Engineering	150	44	29,3	CE
Computer Science and Engineering*	130	15	11,5	C*
Electrical and Communications Engineering	339	68	20,1	EC
Helsinki University of Technology	1706	405	23,7	TKK

*the Information Networks Degree Program is not included

Source: HAREK



Definition

- M** Department of Mechanical Engineering
- CE** Department of Civil and Environmental Engineering
- C** Department of Computer Science and Engineering*
- EC** Department of Electrical and Communications Engineering
- TKK** Helsinki University of Technology

*the Information Networks Degree Program is not included

Matriculated in TKK

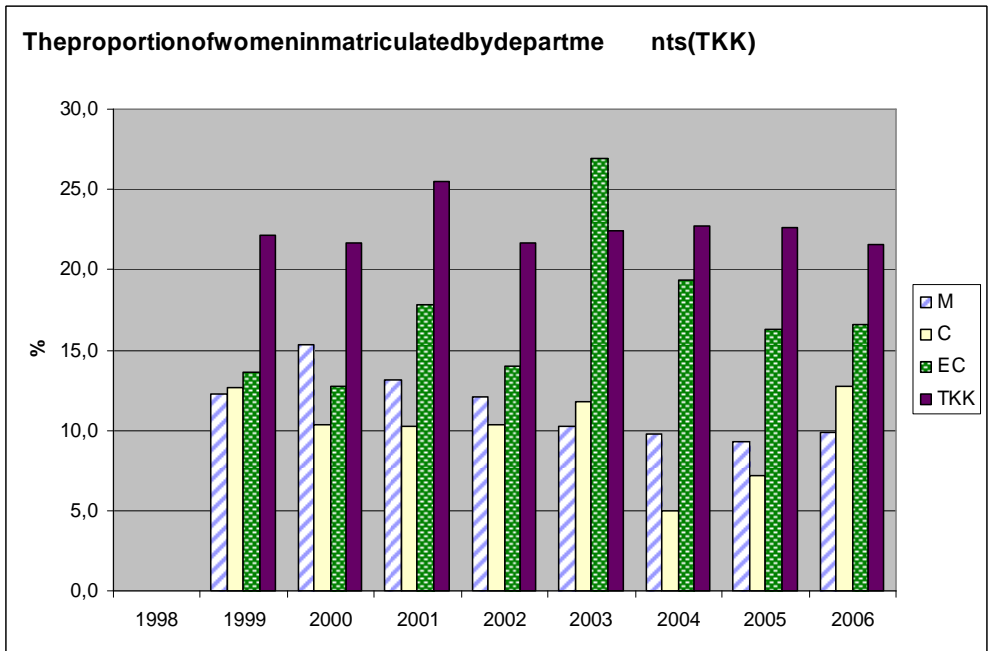
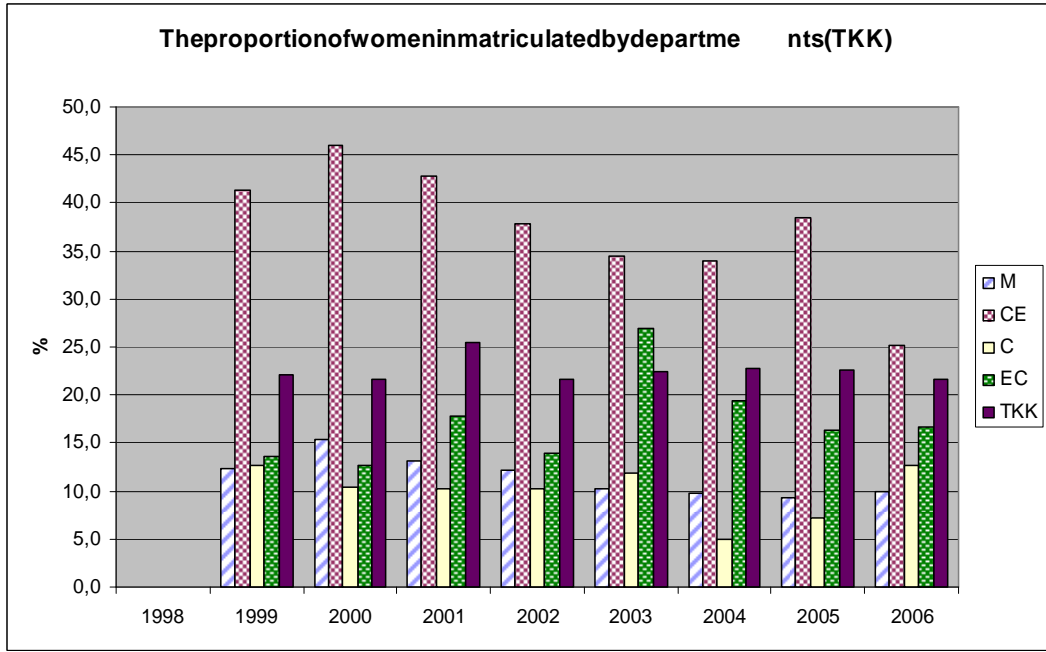
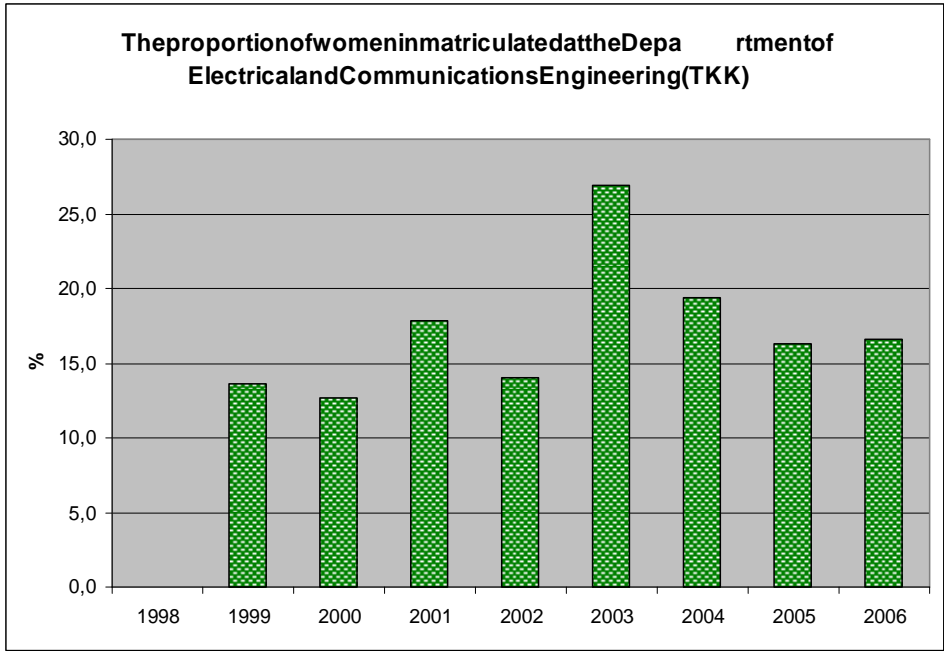
Department	1998			1999			2000			2001			Department
	all	women	women%	all	women	women%	all	women	women%	all	women	women%	
Mechanical Engineering				301	37	12,3	300	46	15,3	290	38	13,1	M
Civil and Environmental Engineering				109	45	41,3	98	45	45,9	131	56	42,7	CE
Computer Science and Engineering*				316	40	12,7	309	32	10,4	244	25	10,2	C*
Electrical and Communications Engineering				447	61	13,6	480	61	12,7	449	80	17,8	EC
Helsinki University of Technology				1905	422	22,2	1855	402	21,7	1789	456	25,5	TKK

Department	2002			2003			2004			2005			Department
	all	women	women%	all	women	women%	all	women	women%	all	women	women%	
Mechanical Engineering	289	35	12,1	281	29	10,3	266	26	9,8	226,0	21,0	9,3	M
Civil and Environmental Engineering	127	48	37,8	151	52	34,4	118	40	33,9	130,0	50,0	38,5	CE
Computer Science and Engineering*	223	23	10,3	169	20	11,8	141	7	5,0	125,0	9,0	7,2	C*
Electrical and Communications Engineering	422	59	14,0	403	68	16,9	350	68	19,4	313,0	51,0	16,3	EC
Helsinki University of Technology	1751	380	21,7	1673	375	22,4	1514	343	22,7	1377	311	22,6	TKK

Department	2006			Department
	all	women	women%	
Mechanical Engineering	223	22	9,9	M
Civil and Environmental Engineering	127	32	25,2	CE
Computer Science and Engineering*	110	14	12,7	C*
Electrical and Communications Engineering	283	47	16,6	EC
Helsinki University of Technology	1308	282	21,6	TKK

*the Information Networks Degree Program is not included

Source: HAREK



Definition

- M** Department of Mechanical Engineering
- CE** Department of Civil and Environmental Engineering
- C** Department of Computer Science and Engineering*
- EC** Department of Electrical and Communications Engineering
- TKK** Helsinki University of Technology

HAREK

*the Information Networks Degree Program is not included

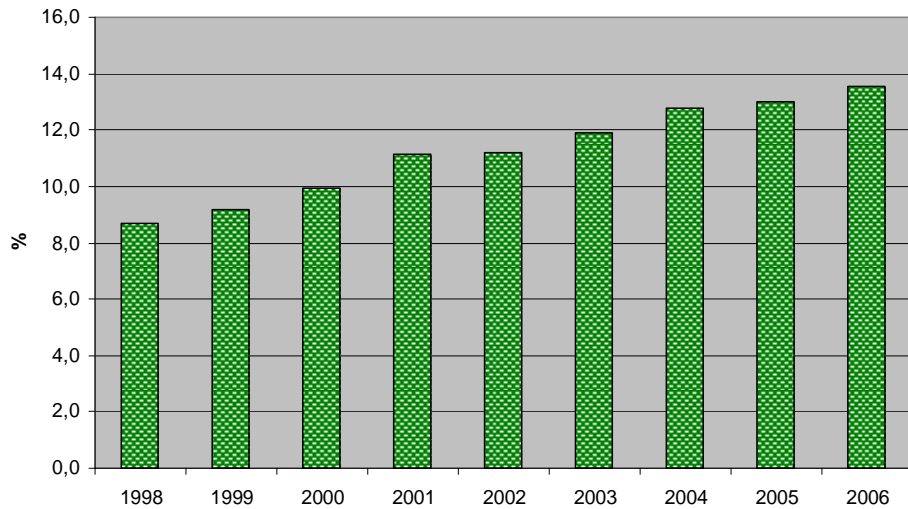
Students in TKK

Department	1998			1999			2000			2001			Department
	all	women	women%	all	women	women%	all	women	women%	all	women	women%	
Mechanical Engineering	1819	145	8,0	1827	159	8,7	1815	185	10,2	1870	200	10,7	M
Civil and Environmental Engineering	764	238	31,2	739	242	32,7	706	242	34,3	766	270	35,2	CE
Computer Science and Engineering	1263	78	6,2	1470	121	8,2	1700	167	9,8	1870	198	10,6	C
Electrical and Communications Engineering	2564	223	8,7	2663	245	9,2	2803	278	9,9	2985	332	11,1	EC
Helsinki University of Technology	10648	1906	17,9	10891	1986	18,2	11218	2098	18,7	11756	2307	19,6	TKK

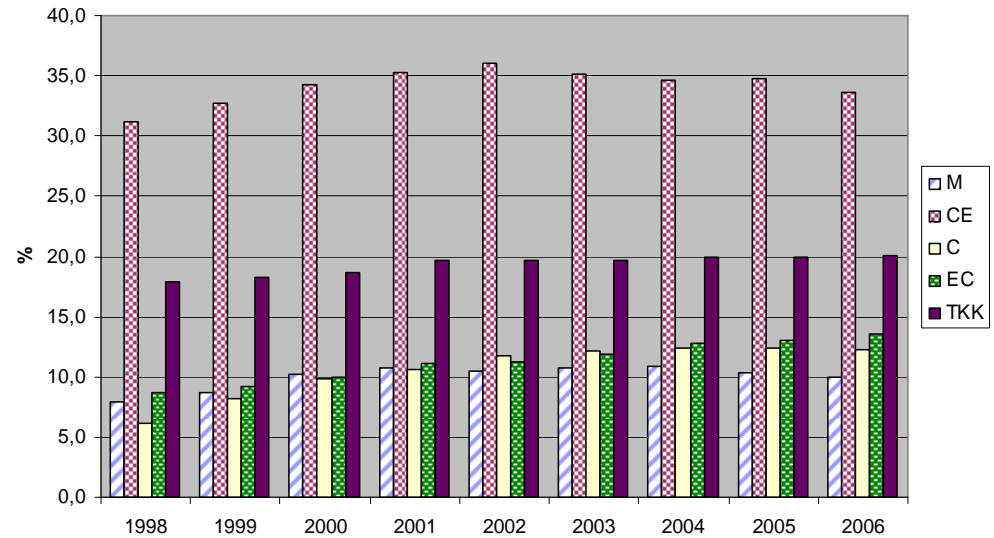
Department	2002			2003			2004			2005			Department
	all	women	women%	all	women	women%	all	women	women%	all	women	women%	
Mechanical Engineering	1897	200	10,5	1927	206	10,7	1969	213	10,8	1967	204	10,4	M
Civil and Environmental Engineering	775	279	36,0	813	285	35,1	844	292	34,6	926,0	321,0	34,7	CE
Computer Science and Engineering	2023	239	11,8	2043	250	12,2	2018	250	12,4	1949	242	12,4	C
Electrical and Communications Engineering	3085	346	11,2	3131	372	11,9	3107	398	12,8	3052	396	13,0	EC
Helsinki University of Technology	12166	2402	19,7	12376	2441	19,7	12430	2478	19,9	12381	2466	19,9	TKK

Department	2006			Department
	all	women	women%	
Mechanical Engineering	1996	199	10,0	M
Civil and Environmental Engineering	991	333	33,6	CE
Computer Science and Engineering	1872	229	12,2	C
Electrical and Communications Engineering	2988	404	13,5	EC
Helsinki University of Technology	12366	2478	20,0	TKK

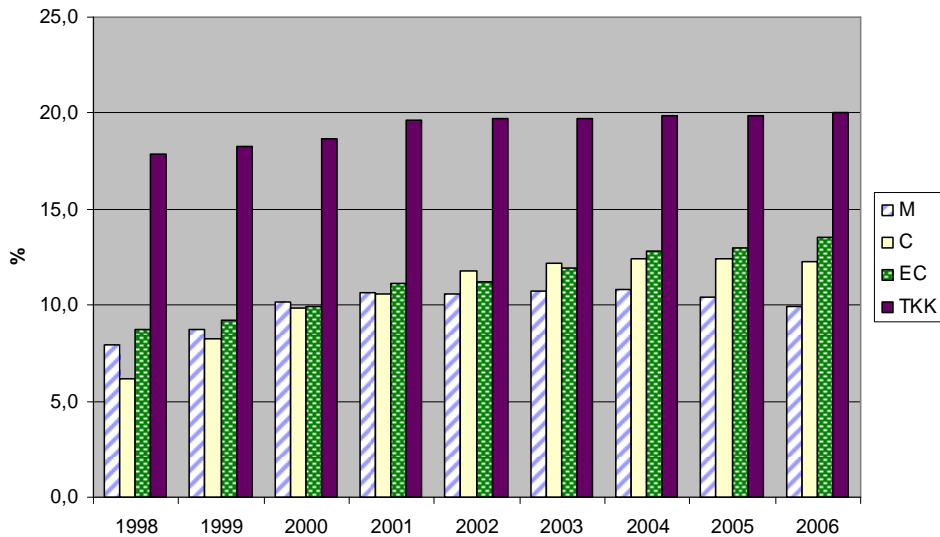
The proportion of women in students at the Department of Electrical and Communications Engineering (TKK)



The proportion of women in students by departments (TKK)



The proportion of women in students by departments (TKK)



Definition

- M** Department of Mechanical Engineering
- CE** Department of Civil and Environmental Engineering
- C** Department of Computer Science and Engineering
- EC** Department of Electrical and Communications Engineering
- TKK** Helsinki University of Technology

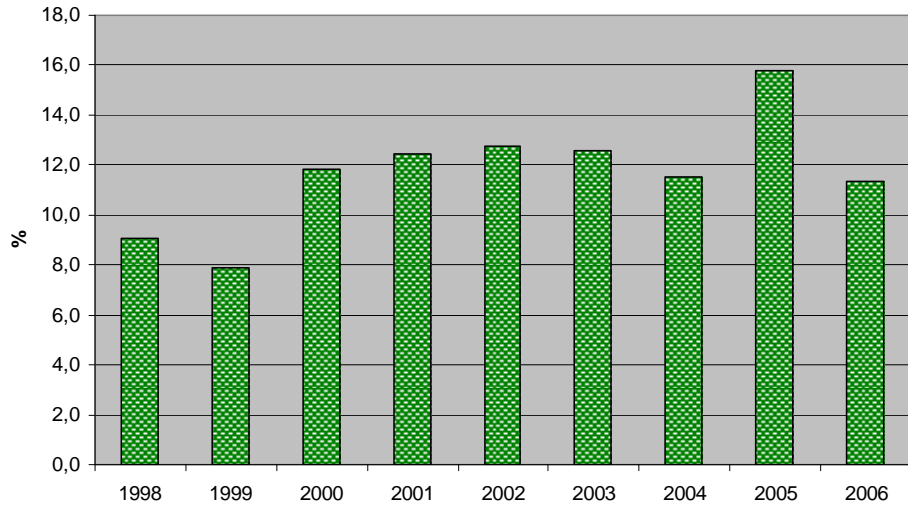
Graduates in TKK

Department	1998			1999			2000			2001			Department
	all	women	women%	all	women	women%	all	women	women%	all	women	women%	
Mechanical Engineering	139	12	8,6	198	20	10,1	143	9	6,3	136	15	11,0	M
Civil and Environmental Engineering	91	26	28,6	84	28	33,3	62	21	33,9	57	17	29,8	CE
Computer Science and Engineering	78	12	15,4	107	9	8,4	75	6	8,0	75	5	6,7	C
Electrical and Communications Engineering	166	15	9,0	254	20	7,9	186	22	11,8	193	24	12,4	EC
Helsinki University of Technology	893	202	22,6	1198	244	20,4	869	181	20,83	853	194	22,7	TKK

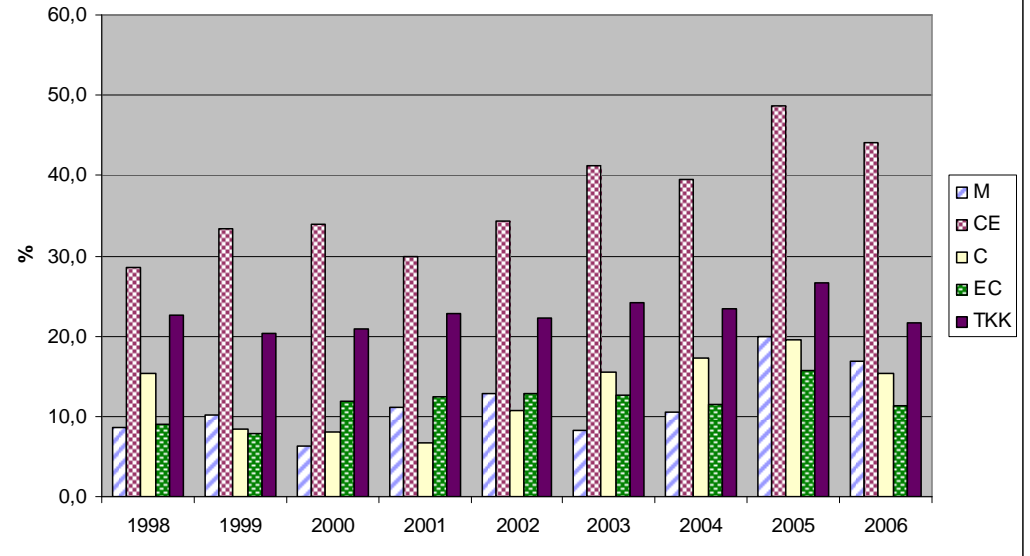
Department	2002			2003			2004			2005			Department
	all	women	women%	all	women	women%	all	women	women%	all	women	women%	
Mechanical Engineering	149	19	12,8	120	10	8,3	132	14	10,6	130,0	26,0	20,0	M
Civil and Environmental Engineering	70	24	34,3	68	28	41,2	43	17	39,5	70,0	34,0	48,6	CE
Computer Science and Engineering	84	9	10,7	103	16	15,5	156	27	17,3	133,0	26,0	19,5	C
Electrical and Communications Engineering	251	32	12,7	262	33	12,6	243	28	11,5	279,0	44,0	15,8	EC
Helsinki University of Technology	940	209	22,23	953	231	24,2	961	224	23,3	1017	271	26,6	TKK

Department	2006			Department
	all	women	women%	
Mechanical Engineering	149	25	16,8	M
Civil and Environmental Engineering	50	22	44,0	CE
Computer Science and Engineering	156	24	15,4	C
Electrical and Communications Engineering	274	31	11,3	EC
Helsinki University of Technology	1007	218	21,6	TKK

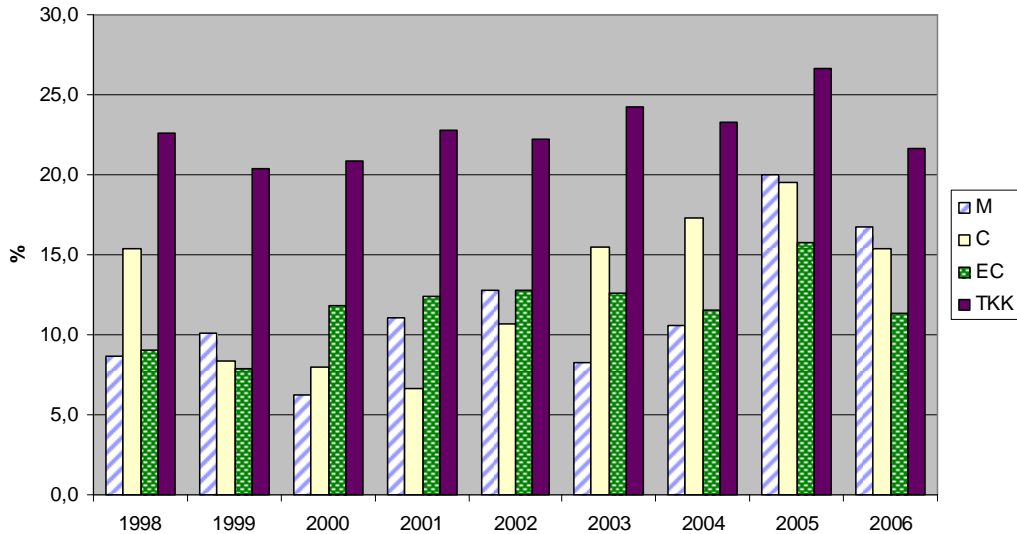
The proportion of womening graduates at the Department of Electrical and Communications Engineering (TKK)



The proportion of womening graduates by departments (TKK)



The proportion of womening graduates by departments (TKK)



Definition

- M** Department of Mechanical Engineering
- CE** Department of Civil and Environmental Engineering
- C** Department of Computer Science and Engineering
- EC** Department of Electrical and Communications Engineering
- TKK** Helsinki University of Technology

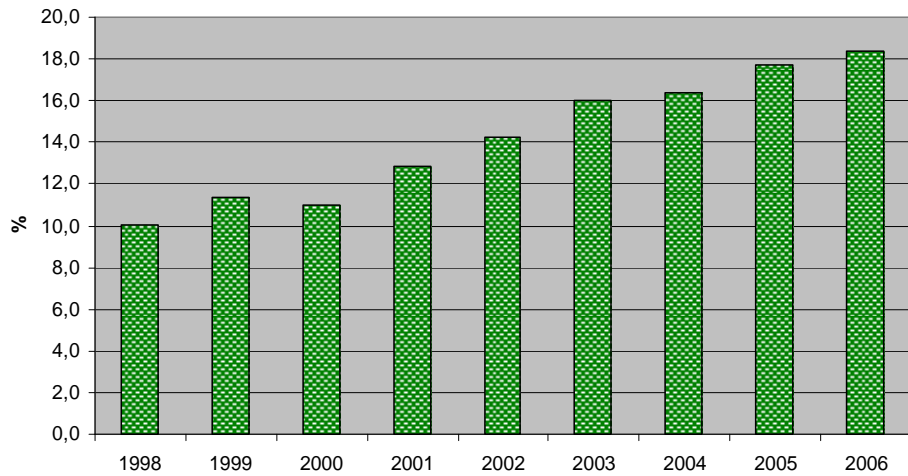
Post-graduate students in TKK

Department	1998			1999			2000			2001			Department
	all	women	women%	all	women	women%	all	women	women%	all	women	women%	
Mechanical Engineering	271	30	11,1	282	35	12,4	259	34	13,1	239	36	15,1	M
Civil and Environmental Engineering	238	55	23,1	259	65	25,1	236	61	25,8	206	57	27,7	CE
Computer Science and Engineering	241	37	15,4	264	46	17,4	272	48	17,6	297	54	18,2	C
Electrical and Communications Engineering	499	50	10,0	529	60	11,3	527	58	11,0	536	69	12,9	EC
Helsinki University of Technology	2514	583	23,2	2681	653	24,4	2606	649	24,9	2508	657	26,2	TKK

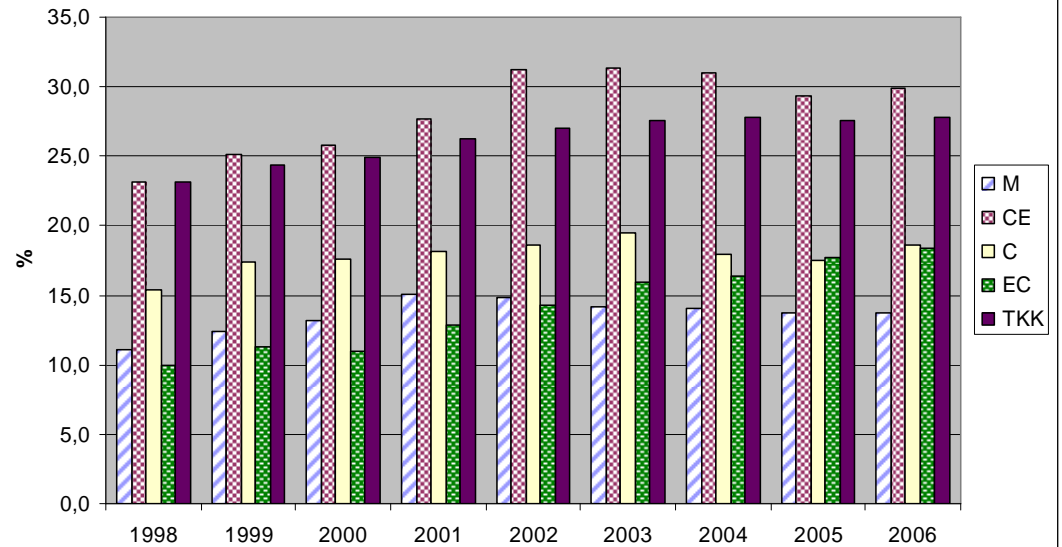
Department	2002			2003			2004			2005			Department
	all	women	women%	all	women	women%	all	women	women%	all	women	women%	
Mechanical Engineering	236	35	14,8	246	35	14,2	227	32	14,1	233,0	32,0	13,7	M
Civil and Environmental Engineering	202	63	31,2	207	65	31,4	213	66	31,0	211,0	62,0	29,4	CE
Computer Science and Engineering	312	58	18,6	353	69	19,5	363	65	17,9	366,0	64,0	17,5	C
Electrical and Communications Engineering	561	80	14,3	601	96	16,0	603	99	16,4	621,0	110,0	17,7	EC
Helsinki University of Technology	2597	701	27,0	2743	757	27,6	2762	767	27,8	2785	768	27,6	TKK

Department	2006			Department
	all	women	women%	
Mechanical Engineering	226	31	13,7	M
Civil and Environmental Engineering	207	62	30,0	CE
Computer Science and Engineering	386	72	18,7	C
Electrical and Communications Engineering	626	115	18,4	EC
Helsinki University of Technology	2765	768	27,8	TKK

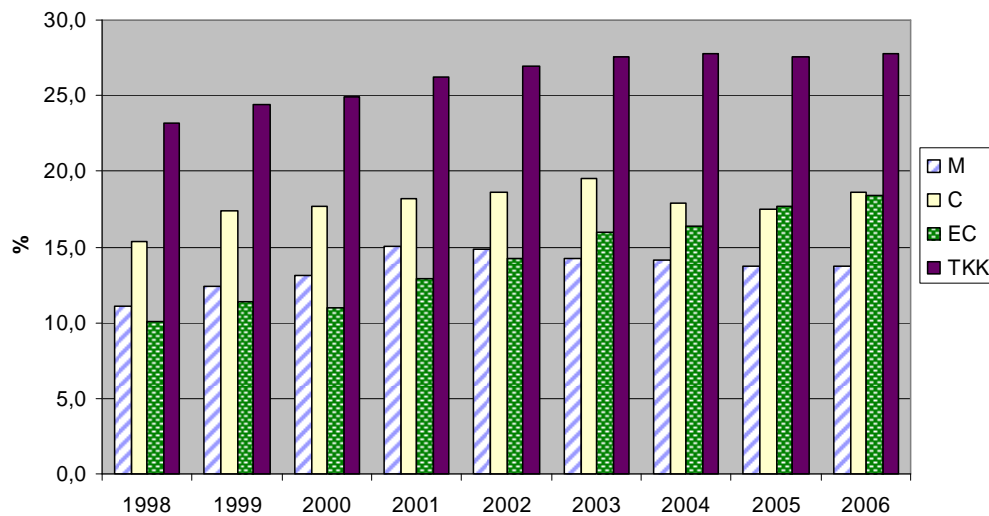
The proportion of women in post-graduate students at the Department of Electrical and Communications Engineering (TKK)



The proportion of women in post-graduate students by departments (TKK)



The proportion of women in post-graduate students by departments (TKK)



Definition

- M** Department of Mechanical Engineering
- CE** Department of Civil and Environmental Engineering
- C** Department of Computer Science and Engineering
- EC** Department of Electrical and Communications Engineering
- TKK** Helsinki University of Technology